



MOSCOW

VLADIVOSTOK



Information Manual



RED BULL TRANS-SIBERIAN EXTREME



RED BULL TRANS-SIBERIAN EXTREME



The Red Bull Trans-Siberian Extreme is the longest and most challenging ultra-stage bicycle race in the world. Wilderness, Ural, Siberia low lands, Siberian mountains, lake Baikal, Baikal mountains, crossing some of the longest rivers in the world, from the Volga in Europe and the Siberian rivers Ob, Yenisei and Angara and the far east river Amur. Passing by the borders of 3 large countries all of Kazakhstan, Mongolia and around 3000 km along the Chinese border! Crossing 8 time zones! Temperature differences of up to 40°C from lows in nights to highest during the day! Several climatic areas from continental climate to sub tropic in the Far East!

Discipline:	Ultra Long Distance Bicycle Stage Race
Start:	24th of July, 2018 - 09:00 am (16th of July, 2019 - to be confirmed)
Location of Start:	Moscow city centre, theatre square opposite Bolshoi Theatre
Finish:	Vladivostok
Total distance:	9100 km
Accumulated altitude:	77.000 m
Arrival:	afternoon of 17th of August, 2018 (9th of August, 2019)
Stages:	15 stages, 25 days, 1 day rest



15 STAGES 9,100 KM



2018 - TIMING

- July 21st, 2018
(July 13th, 2019) - arrival in Moscow

- July 22nd, 2018
(July 14th, 2019)
 - introduction seminar covering rules & regulations
 - cars distribution
 - radio communication equipment
 - logistics, food planning
 - getting introduced to the international participants and the support team
 - preparation of cars and set up by each team
 - medical tests

- July 23rd, 2018
(July 15th, 2019) - bikers - photo shooting, press interviews and press meetings

- July 24th, 2018
(July 16th, 2019) - 9:00 am start at the "Theatre square" in Moscow City Centre

RACE

- August 17th, 2018
(August 9th, 2019) - arrival in Vladivostok, victory ceremony

- August 18th, 2018
(August 10th, 2019) - packing day and departure date

- August 19th, 2018
(August 11th, 2019) - departure date



STAGE PLAN - TIME LIMITS





FULL SUPPORT CONCEPT

Red Bull Trans-Siberian Extreme is organized as an “almost all-inclusive project” covering planning, hotels half board, food supply, medical and physiotherapy service and mechanical bike service.

A unique mobile kitchen car, a fully equipped Volkswagen Crafter and a professional catering team takes care about food supply during the stages and provides excellent dishes, cold and hot as well as fruits, tea and coffee.

The Red Bull Trans-Siberian Extreme is considered to be the best supported ultra-cycling race in the world.



FULL SUPPORT CONCEPT

A team of doctors and physiotherapists will be 24 hours available to make sure that the sportsmen can fully concentrate on the Race and are perfectly treated after and before each stage.

A team of professional bicycle technicians will support during the race and will service the bikes after each stage and prepare them for the next start.





AN EXPERIENCED TEAM



Katharina Bruck



Paul Bruck



Anastasia Likhaeva



Boris Senatorov



Alexey Shchebelin



Alexander Kvasha



Heiko Appenrodt



Ivan Sverdlik



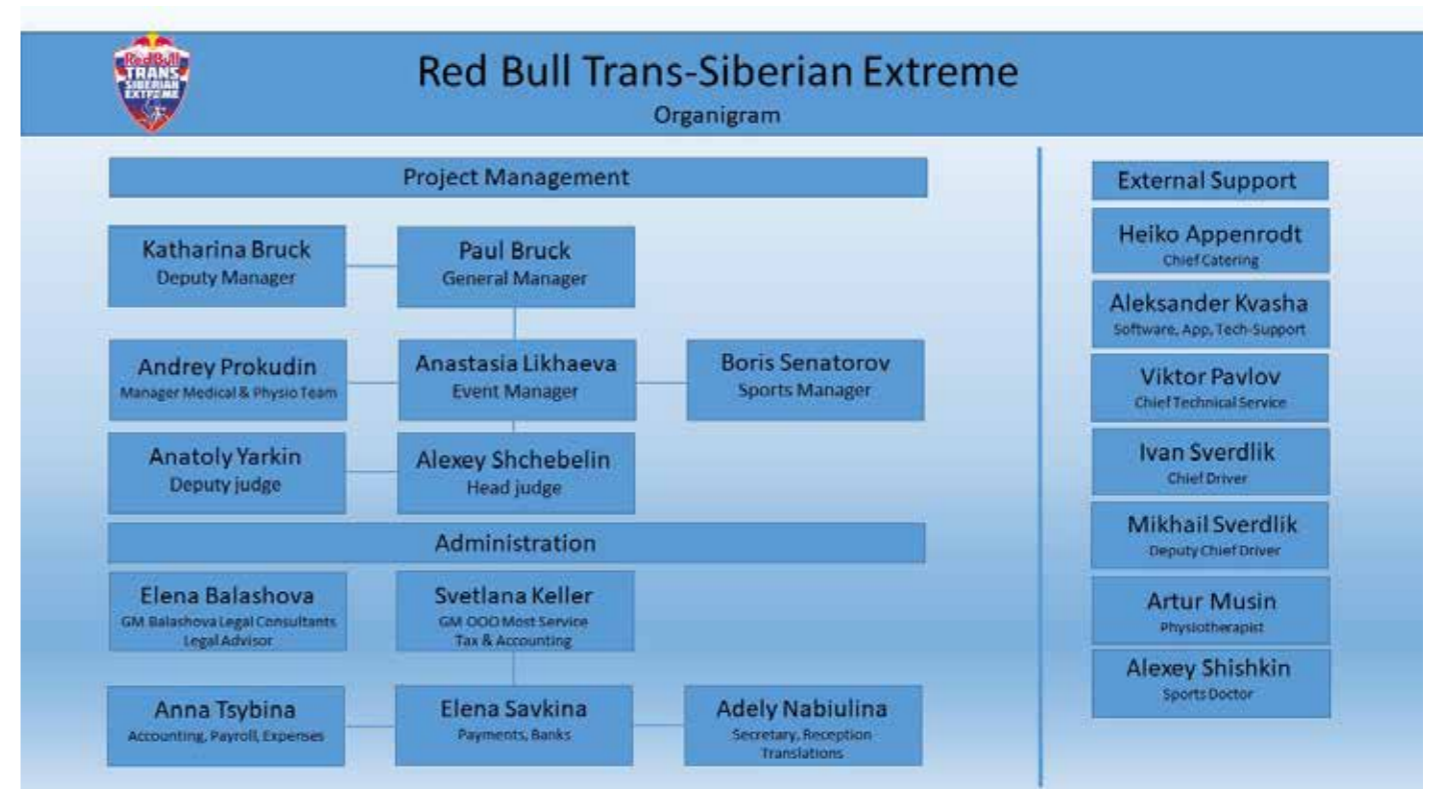
Viktor Pavlov



Andrey Prokudin



AN EXPERIENCED TEAM







REGISTRATION AND COSTS

Registration opens from October 1st

The number of participants is limited - SOLO Teams only: men and women

A committee consisting of representatives of the organizer, the sports-management and Red Bull is deciding about final participation of applicants depending on proved successes and performance of other extreme bicycle races. Former participants of Red Bull Trans-Siberian Extreme have a fixed place.

SOLO -Team – 22.500,- EUR excl. VAT

Early bird registration is 20.000,- EUR: registration until December 1st and 50% registration fee to be paid until January 31st

Package for SOLO teams covers the costs for 1 biker, 1 personal supporters and 2 drivers (provided by organizer) (1 double room, 1 double for drivers) as described below!

All Inclusive Packages cover following services:

- Hotels (min. 3 star hotel) at all stages incl. “half board” from July 21st, 2018 (arrival) until August 18th, 2018 (departure) – extra night before or after these dates need to be paid at the hotel. In Moscow and 7 other cities Hilton is our hotel provider.
- Food supply provided by a professional catering team and a cooking car – 24 hours support and supply of standard food (no special nutrition) – sandwiches, fruits, vegetables, one warm lunch per day at short stages; breakfast, lunch and dinner at very long stages, water, tea, coffee, soft drinks,
- Rental of a team car equipped with roof box and bike carriers, 1 car per biker including service and transportation of the cars back from Vladivostok to Moscow
- 2 Russian-speaking drivers per car
- Hotel and food costs for the drivers
- Radio communication equipment for all cars (car to car/not car to biker)
- I-phones for mobile phone and navigation with the RBTSE App
- Insurance of team members and cars
- Medical support
- Medical check in Moscow
- Video and photo shooting – photos provided to the athlete for editorial use
- Technical service for bicycles and cars on the road (bike specific spare parts are not included or are subject to be paid)
- Petrol and car wash



REGISTRATION AND COSTS

Not included in the “All-Inclusive Arrangement”:

- Flights from abroad to Moscow and from Vladivostok back
- Special nutrition
- Mini bar expenses in hotels
- Washing and dry cleaning of clothes and sports dresses
- Special food wishes, depends on availability
- Alcohol and bar consumption in hotels
- Excess baggage and bike transport on airplanes
- additional hotel room in case of 2 personal supporters (approximate costs 3.000,- EUR)

Disqualification:

In case of disqualification (see rules & regulations) biker teams are dropping out of the race! They can continue the route and bike individually not in the race! In case of additional nights in hotels are required, they need to be paid extra. Participants are responsible for their teams, means costs for additional hotel nights for drivers and support team are to be covered.

Other items to be covered by the teams:

Each racer must provide his own support crew (masseur and/or sport-therapist) and race equipment: bicycles, team outfit, sports nutrition, specific bike spares, hygienic accessories, etc.) on own costs.

Teams must cover the transportation of their team equipment and clothing - excess baggage at flight to and from Moscow as well as from Vladivostok to Moscow.

Find a Team member:

If you are looking for a team member, let us know. We can also support with finding local masseur and sport-therapist – costs depend on qualification and availability.





LOGISTICS AND BASICS

Cars

The organizer provides each biker a Van including a bicycle mount and a roof box. The Vans are comfortable for 3 support staff including the local driver.

Drivers

Organizer will provide 2 professional drivers for each car.

Driving license

We recommend arranging an international driving license.

Bike Transportation to Moscow and back from Vladivostok

Transportation of bikes to Moscow should be planned on time with the carrier.

Bike boxes will have to be stored in Moscow, as they are too bulky to take them on the route.

Packing of bikes for the flight back to Moscow will be provided. It is better to use soft bike bags, which can be folded.

Visa Invitation

Visa invitation will be provided by the organizers Moscow based company. Detailed data are requested in the registration form. Please send a copy of your passport to the organizer. Please see the special section: visa support. Visa invitation will be provided during the first week of May! We will send you the electronic format of the form, but will send the originals by courier to the consulates, since most of them need the original. This procedure is for Schengen member countries only. Countries outside the Schengen zone have different regulations and we take care as needed.

Hotels

Hotels in Moscow and at each stage are pre reserved. We have concluded special agreements with all hotels on the road.

Our Hotel partner in Moscow is Double Tree Hilton, which offers also storage of travel boxes (for bikes) and other bulky staff, which you may not be able to take along on the race! Hotel costs are included in the all-inclusive package, covering room, breakfast and business lunch, as appropriate and timing. Extras from Mini bar, bar expenses, alcohol have to be covered by each individual.

If you stop over in Moscow on your way home costs for overnight are to be covered by you!

Bike boxes

Please note that we cannot take hard boxes on the route

Storage of luggage in Moscow

Hotel Double Tree Hilton Moscow offers storage of bulky luggage for free!



LOGISTICS AND BASICS

Insurance

Everybody needs a valid insurance for Russia. This insurance is also necessary when applying for visa – see visa section: confirmation of insurance. We will provide special SOS insurance locally in Moscow, but this is not sufficient for the visa.

Flight to Moscow & flight from Vladivostok

You have several options to book your flights!

When booking your flight to Moscow, check possible arrival at Sheremetyevo airport, as this is close to the hotel. Aeroflot offers quite reasonable prices and it is relatively easy to change tickets.

For the flight back from Vladivostok we recommend Aeroflot or S7 and continue directly home.

www.aeroflot.com www.s7.com

Telephone/Roaming

Please note that roaming is extremely expensive, so do not use your home mobile!

Mobile networks

Mobile networks are available in most areas. We provide phones and SIM Cards for local call only, without international calls.

GPS – Navi Systems - Garmin

We have all GPS data available from previous years. All teams will get an I-Phone with the complete track data via the Red Bull Trans-Siberian Extreme APP and gpsies data

DURING THE RACE

Teams

The whole team of Red Bull Trans-Siberian Extreme consists of more than 20 cars and 100 people.

Support team

The support team consists of 6 supporters, 1 cooking car and 1 management car.

Details of names, positions and contact details will be provided prior the race start.

Process start

In most cases we start in the center of the major cities with local administration and police support and depending on the location, with special events, to make the start also attractive to public. Local bicycle clubs and bike enthusiasts are invited to accompany the race to the edge of the city. Police will in most cases close roads and guide the whole Red Bull Trans-Siberian Extreme team out of the city.

Bikers will ride in “bulk”.

Management car will be leading the whole group.

When the sports director lifts the green flag, then the teams are free to ride on their own.



LOGISTICS AND BASICS

Process and Checkpoints

Support cars will function as following:

1 support car with a doctor will be always behind all racers

1 support car with a doctor will be in the middle of the groups, and 1 support car with a doctor will drive ahead depending on the stage, between 90 to 120 km, and be available for the race teams for whatever they need.

We will fix places and provide food and beverages. We will support buying petrol during long stages to avoid delays and accompany the racers for not losing time. Assist at critical turns to take the right road, which is not often the case.

Food & beverage

A fully equipped mobile home will function as kitchen. An experienced cooking team will do all to make all happy and provide sufficient food for everybody. Extra wishes will be taken into consideration, but without guarantee.

Petrol

Petrol is relatively cheap in Moscow. Diesel for the Multivan will cost 30-35 Rouble per liter. Usually there are plenty of petrol stations. The only region, where you have to take care of your fuel resources is between Chita and Svobodny, the longest stage of 1400 km and relatively few stations.

Make sure you instruct your driver that the car is filled up at every start. Anyway our chief driver will coordinate.

Washing of clothes

All hotels offer laundry services! You need to pre-order the laundry service on time to be ready for the next stage start. Washing clothes is NOT INCLUDED and must be paid at check-out.

Exchange money

If you take cash and you want to change money, rule number 1 is to only change money in banks and never at any exchange office.

Credit card

Russia is a credit card country and you can pay almost everywhere with credit cards. You can also cash with credit cards or your ATM/Bankomat cards at ATM machines.

Check your weekly or monthly credit limit with your credit card institute before.

Some ATM may also have daily limits..

In many cases your PIN is required. Make sure, you have a PIN for your credit card.

Languages

We speak: English, German and Russian (some team members also speak French and Italian)

We will assist wherever we can.



LOGISTICS AND BASICS

VISA Support

Please find your Russian embassy or consulate here:

<http://www.russianembassy.ru/en/embassies/listcountries>

Important points:

1. You need to fill out your visa application online
2. You need to fill out your confirmation of insurance – insurance card

Please apply, depending on your country, for a visa for sports and culture!

If this option is not possible, then apply for a business visa!

DO NOT APPLY FOR TOURIST VISA

USE A LOCAL VISA CENTER – should be available at website of the Russian embassy in your country.

DON'T use visa services, which cost a lot! You have an invitation from us. Visa should cost around 70 Euro per person.

Inviting organization

Company: Most Management LLC

Address: 129594 Moscow, 2. Marina Roshcha street 2A

Tel.: +7 495 646 20 77 or +7 916 5793289

Entry: single entry

Route: Moscow-Vladivostok-Moscow

Visa validity: July 10th until August 15th – unless you want to stay longer. Then you need to inform us to issue the dates in the visa invitation correctly

Contractual partner:

Bruck Consult Vienna for International teams

OOO Most Management Moscow for Russian teams

Registration is payable either to OOO Most Management Moscow or to Bruck Consult Vienna

Contacts:

General Manager - Paul Bruck - p.bruck@most-sport.com

Deputy Manager - Katharina Bruck - k.bruck@bruckconsult.com

Event Manager - Anastasia Likhaeva - a.likhaeva@most-sport.com



SOLO Results men 2015 - 2017

RB TSE 2015		
SINGLE RIDERS - OVERALL RANKING		
1 st	Kristof Johan Allegaert 318h 57m 30s	28.8 km/h
2 nd	Eduard Fuchs 331h 52m 13s	27.7 km/h
<i>Did not finish all stages, time incl. penalty.</i>		
3 rd	Steve Harvey 337h 35m 49s	27.2 km/h
4 th	Denis Madjara 399h 11m 43s	23.0 km/h
<i>Did not finish all stages, time incl. penalty.</i>		

RB TSE 2016		
SINGLE RIDERS - OVERALL RANKING		
1 st	Alexey Shebelin 336h 18m 5s	27.3 km/h
<i>Did not finish all stages, time incl. penalty.</i>		
2 nd	Eduard Fuchs 347h 25m 36s	26.4 km/h
<i>Did not finish all stages, time incl. penalty.</i>		
3 rd	Marcelo Florentino Soares 388h 7m 26s	23.6 km/h
<i>Did not finish all stages, time incl. penalty.</i>		

RB TSE 2017		
GENERAL CLASSIFICATION		
1 st	Alexey Shchebelin 312h 16m 58s	29.3 km/h
2 nd	Pierre Bischoff 315h 31m 33s	29.0 km/h
3 rd	Marcelo Florentino Soares 326h 4m 2s	28.1 km/h



